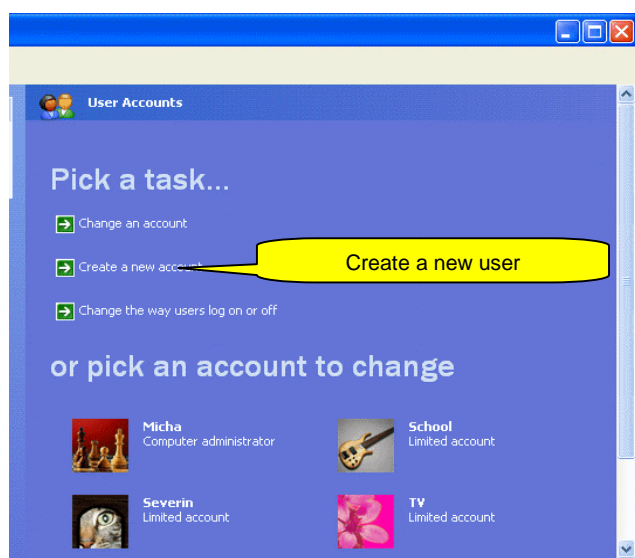


Manual KiddiKit

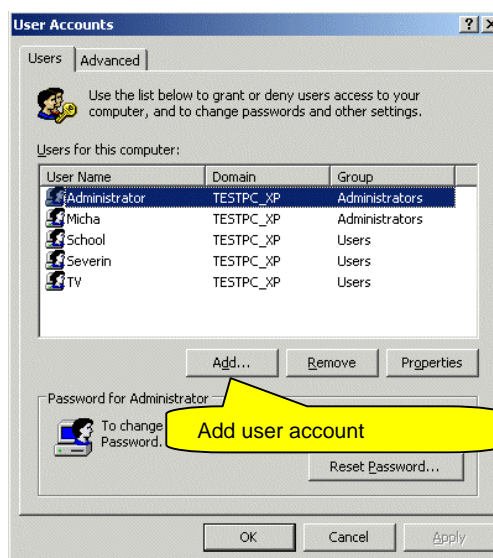
In the following document you can familiarise yourself with the administrative functions of **KiddiKit**.

KiddiKit is built on the user administration of Windows. If you don't have set-up an user account for your child yet, you need to add several user accounts (e.g. School, TV, Games, etc.) before you start configuring **KiddiKit**. This can be done by clicking **START/control panel/user accounts**. These user accounts should not have administrative rights, as an administrator with knowledge of the system can deactivate **KiddiKit**. Depending on your windows version and design, you can create a user account with the following dialogue.

Windows XP design:



Classic design:

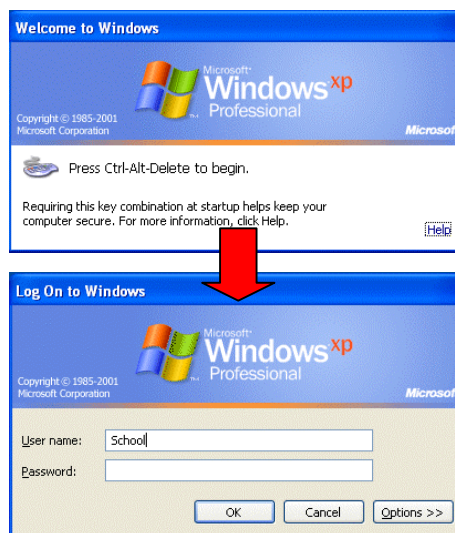


After creating user accounts, please log-in with every new added user at least once. Then the user profiles are provided in the computer.

Windows XP log-in screen:



Classic design:

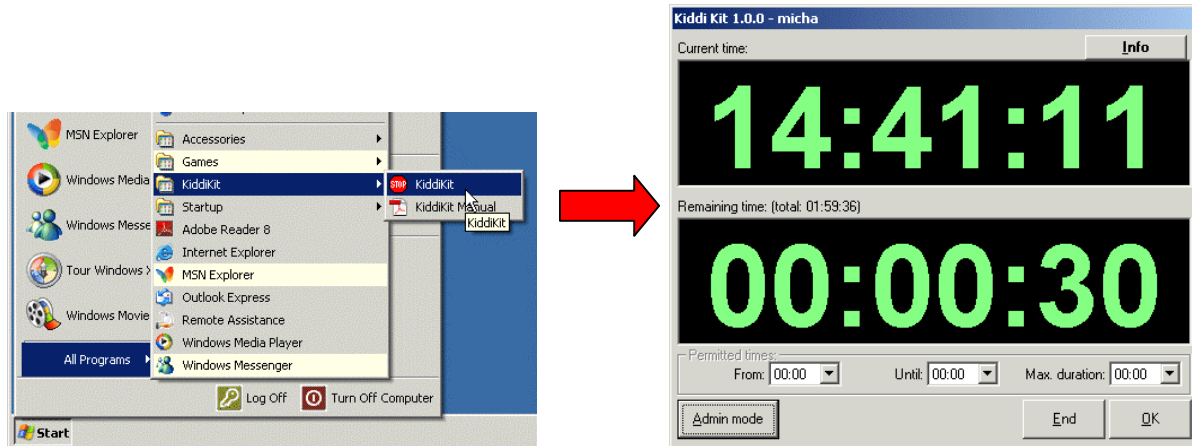


Now boot your computer again. Then the changeable user profiles are available without restrictions.

If you have executed the steps above, please log-in with the administrative user (in this example "Micha").

The first program start

Start your **KiddiKit** via **Start/programs/KiddiKit/KiddiKit**. If you have chosen another program group at installation please use that one. The main screen of **KiddiKit** opens.



As long as no limits are set, the countdown is off.

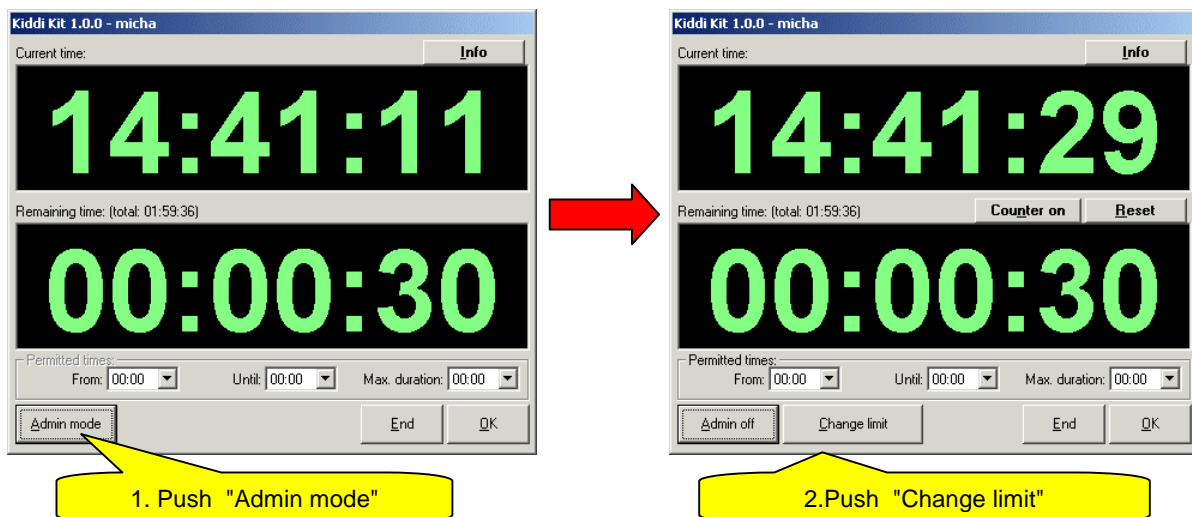
If you have started **KiddiKit** before and it starts automatically, open the application by double-clicking on the stop symbol right below in the system tray beneath the clock.



Administrative mode

Activate the administrative mode by pushing the “**Admin mode**” button and enter the administrative password if necessary¹.

In the administrative mode you have further buttons available. Push the button “**Change limit**” for accessing the setting dialogue “**Limit**”.



¹ The administrative password can be set in the limit menu.

Setting dialogue "Limit"

Here you can change all necessary settings for limiting the user accounts. The settings in particular stand for:

The image shows a screenshot of the Windows 'Limit' dialog box for a user named 'severin'. The dialog is divided into several sections: 'Times, warnings and system restrictions', 'Permitted applications', and 'User log'. The 'Times' section shows a table of permitted times for each day of the week, with a 'Max. duration' column and 'Active' checkboxes. The 'Notifications' section includes 'remaining time notification 1' and '2', and 'Notification at exit'. The 'After expiration of time execute following command' section has radio buttons for 'Shut down' and 'Log-out', and a checkbox for 'Autostart'. The 'Lock the following system settings' section has checkboxes for 'Control panel', 'Execute', 'Folder options', 'Context menu', 'Tray-context', 'Search', 'Display', 'Taskmanager', 'Registry', and 'Clock'. At the bottom, there are buttons for 'Change password', 'OK', 'Cancel', and 'Apply'.

Callout boxes A through S provide the following descriptions:

- A:** Select user for whom the restrictions should be changed
- T:** Activate restrictions set in this screen for this user
- S:** Tab page to assign permitted or prohibited applications (page 5)
- B:** Tab page for setup of system settings and limits
- R:** Show or hide log of the chosen user
- C:** Time frame(s) the user is allowed to use the system
- Q:** Maximum duration the user is allowed to use the system
- P:** Activate restrictions set for this day
- D:** Remaining time 1 prior permitted time expires
- O:** Notification for remaining time 1
- E:** Remaining time 2 prior to expiry of permitted time
- N:** Notification for remaining time 1
- F:** Notification appearing shortly before logging out
- M:** KiddiKit starts automatically
- G:** Behaviour after expiry of limited time
- L:** Here you can set the system restrictions (page 4)
- H:** Change administrative password (page 4)
- I:** Save set restrictions for this user and close screen.
- J:** Discard set restrictions for this user and close screen
- K:** Save set restrictions for this user without closing this screen

Example for configuring KiddiKit:

At first choose for "user" **A** the account (e.g. TV), then set the time frame at "Times" **C** in that the computer may be used as TV (e.g. 12:00-16:00). When there are two or more time frames, please use a semicolon (e.g. 12:00-14:00;16:00-17:00). This can be limited for each day individually.

At "Max. duration" **Q** you can set the time limit for the particular day (e.g. you have set the times 12:00-14:00;16:00-17:00, though you want your child to watch TV only two hours). By marking the checkbox **P** beneath "Max. duration" you activate the limit for the particular day. So each day can be individually limited.

In "At remaining time:" **D** the time can be set when your child will get notified for the first time about the remaining time by a dialogue coming up front. In "Notification 1" **O** you can add a text that will be displayed then.

The second remaining time **E** and the corresponding notification text 2 **N** can be set as well.

In "Notification at exit" **F** you can choose the text that should appear at shutting down the system.

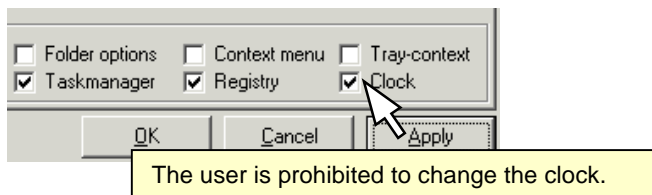
At **G** you can set the behaviour of the system after expiry of prohibited time and at **M** the automatic start from **KiddiKit** at logging in from the particular user will be executed at setting the checkbox.

*(The system restrictions **L** will be explained at page 4)*

If you have modified all settings for the desired user account, please check, if the Option "Activate limit for this user" **T** is set in the checkbox and save your settings with the button "Apply" for limiting further user accounts (e.g. School, Games, etc.) without having to start the dialogue again. If you confirm the settings with "OK", the dialogue will be left and you will have to start it again to limit further user.

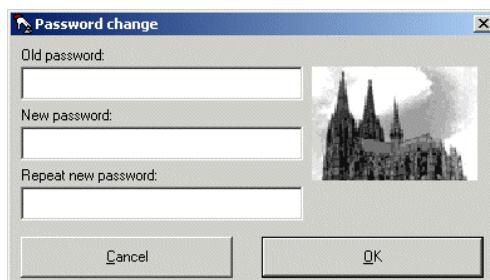
System restrictions

The options you can change in the “**Lock the following system settings**” area will be explained with tool tips when you guide the mouse cursor over a not coherent option. All safety relevant options that prevent the not wanted shut down of **KiddiKit**, are pre-set as standard. If you are not sure about the options, please leave the pre-set options at least.



Decide password for administrative mode

Via the button “**change password**” you can set your administrative password or change it if necessary..

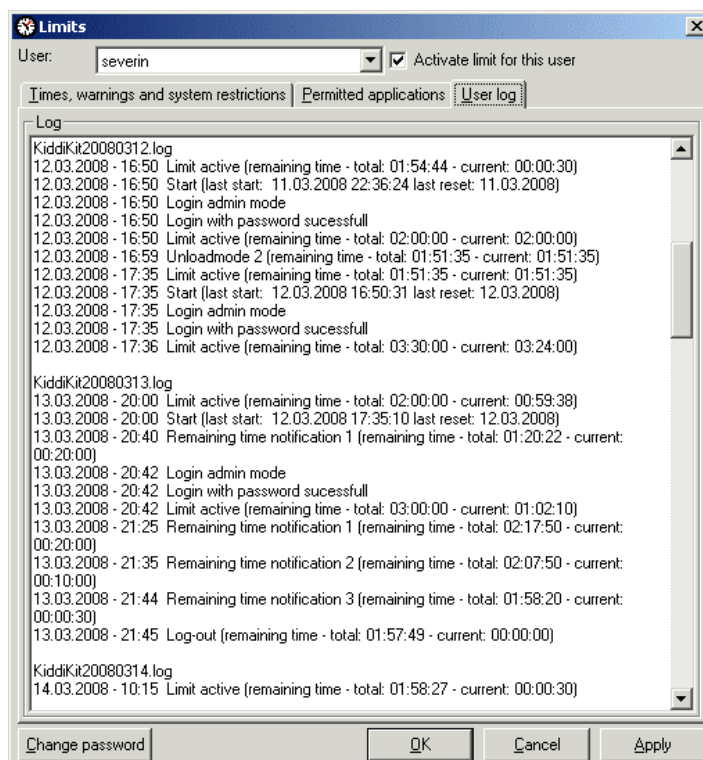


If you have not set a password yet, please enter a password at “**New password**” and repeat that again at “**Repeat new password**”. Now confirm it with “**OK**”.

For setting a new password, enter the old password at “**Old password**” and proceed like above.

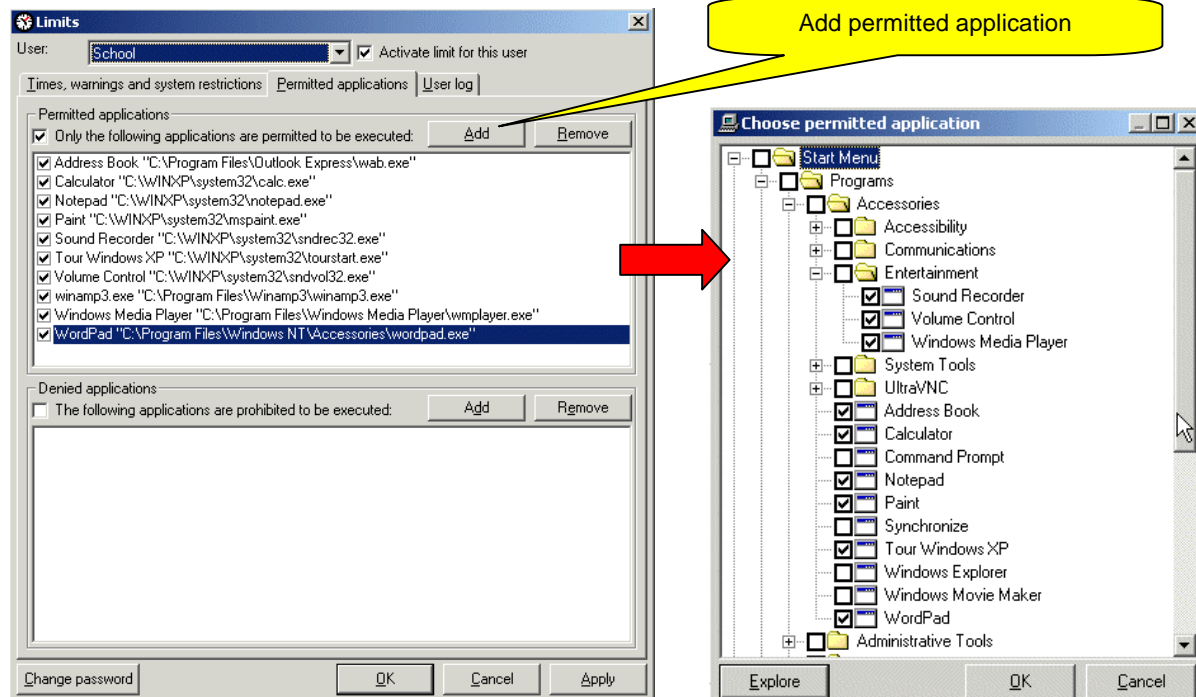
Log

In the “**Log**” dialogue you can trace the use of the particular user account.

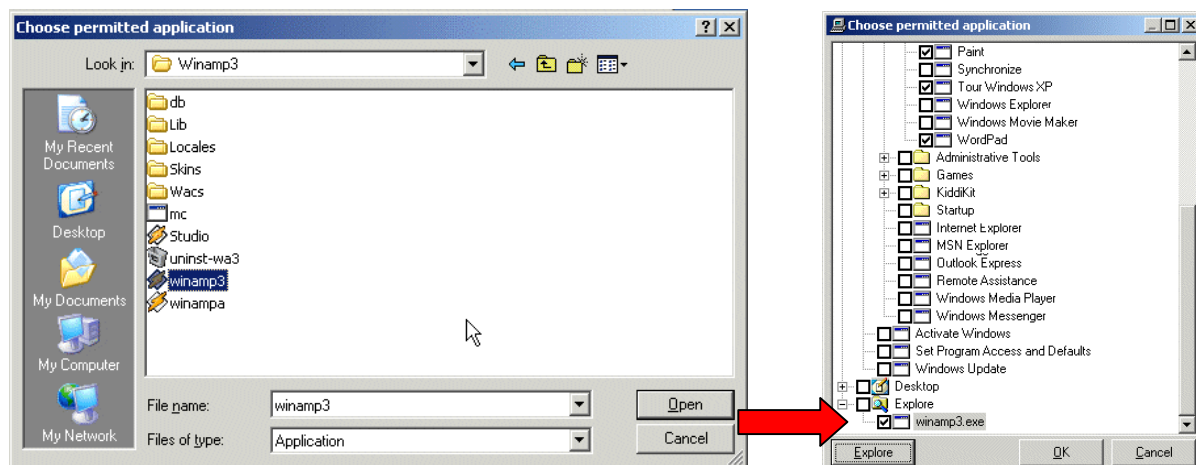


Permitted and prohibited applications

In the “Permitted applications” dialogue you can set the applications that are permitted at the particular user account (e.g. the child can train vocabulary in the school account, listen to music with the media player, etc. though it’s prohibited to surf with the internet explorer in the internet)



With the button “Add” you can assign further applications your child can for example use in the school account. In the following dialogue there are all applications listed that were found on the system. Check the box for applications that are permitted for use.



If an application does not appear in the list, you can add it manually via the “Explorer” button. Confirm the chosen program with “Open”.

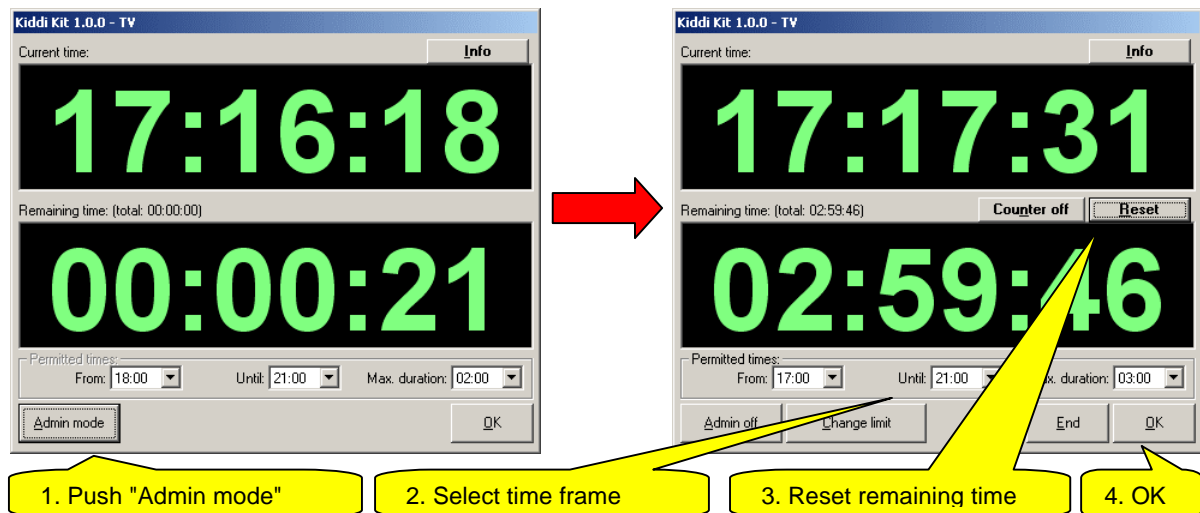
If you have checked the desired applications, you can transfer them to the list of permitted applications with the button “OK”. If one of the applications should be removed temporary just uncheck the box and if you want to remove it permanently, push the “Delete” button.

Proceed activating the list by marking the checkbox above the list.

When all applications of the PC with some exceptions are permitted for use, choose the lower list “Prohibited Applications” for locking applications that must not be used.

!!! It is not possible to use both lists at the same time !!!

Temporary changes of limit



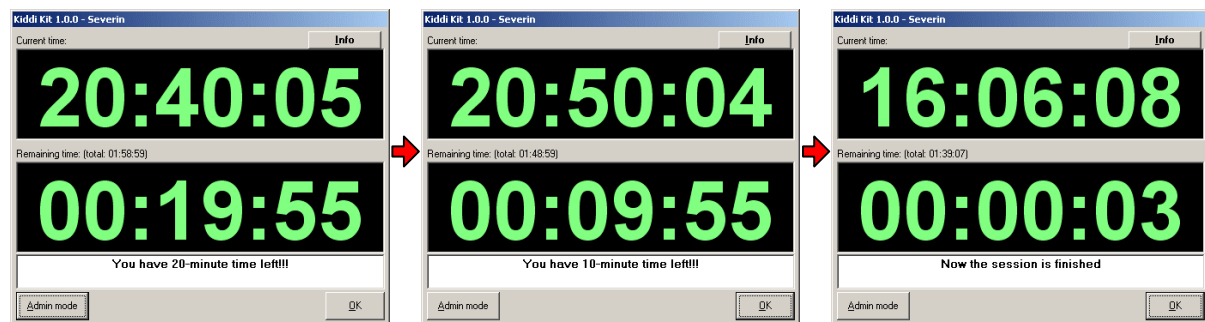
To modify a temporary time limit (your child may watch TV earlier and longer for example) please log-in to the particular account at your windows.

- If you log-in in a prohibited time frame **KiddiKit** immediately will start and you have 30 seconds to activate the admin mode.
- If you log-in in a permitted time frame you can start **KiddiKit** with double-click below at the right in the system tray.

Push the button "**Admin mode**" and enter your password. Then you can set the temporary time frame in the dialogue area "**Times**" at "**Permitted from**" and "**Permitted until**" and at "**Max. duration**" the maximum permitted duration of use of the system for today. To activate this time frame you need to push the button "**Reset**" to reset the remaining time. Then you can push ok and **KiddiKit** minimizes in the system tray.

Expiration of limit

KiddiKit appears with three notifications the remaining time as displayed:



At remaining time 1, notification 1 appears

At remaining time 2, notification 2 appears

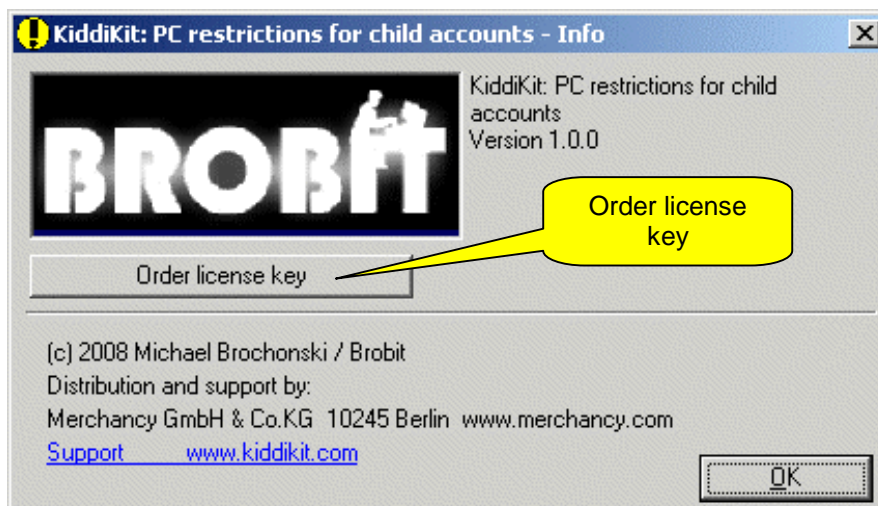
The session will be closed

Expiration of test period / Licensing

After a 30 days test period you can activate the software again with a key file. This key you will receive by paying €10.- and registering. You will get to the registration page by pushing the button "Info and registry"



Push the button "Order license key" in in the following info-dialogue. Permit access from KiddiKit to the internet in your firewall!



With valid key you are authorized to use the software unlimited time on one PC.

Thank you very much for choosing **KiddiKit**.